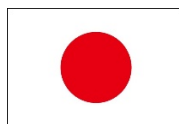




2018



The 17th Norway Friendship Yacht Race Cruiser Division

SAILING INSTRUCTIONS

1. RULES

- 1.1 The regatta will be governed by the rules as defined in The Racing Rules of Sailing 2017 - 2020.
- 1.2 IRC Rule 2018 will apply to IRC class.
- 1.3 If there is a conflict between languages the English text will take precedence.

2. NOTICES TO COMPETITORS

Notices to competitors will be posted on the official notice board located of the Regatta Office located in the Room B on the first floor of Enoshima Yacht House. And those on the water will be notified verbally by the race committee signal vessel.

3. CHANGES TO SAILING INSTRUCTIONS

Any change to the sailing instructions will be posted on 1 hour before the race starting time on the day it will take effect. And the race committee signal vessel will notify the changes verbally on the water. Any change to the schedule of races will be posted by 1800 on the day before it will take effect.

4. SCHEDULE OF RACES

4.1 Date and warning signals

DAY 1: April 21st (Sat)

1055	IRC class and One-design classes:	Race 1, inshore race warning signal
		Race 2, inshore race will follow after the race 1 completed.
1730	Welcome party (Meeting room A)	Yacht House 2F

DAY 2: April 22nd (Sun)

0855	IRC class, One-design classes and Open class	Race 3: Short offshore race warning signal
1500	Award presentation and Party (Main room on the 2 nd floor of Yacht House)	

- 4.2 To alert boats that a race or sequence of races will begin soon, the orange starting line flag will be displayed with one sound at least five minutes before a warning signal is made.
- 4.3 When the race committee decides to abandon the races due to bad weather condition it will notify no later than 0800 of the day. Contact the race office at 0466-22-0261 to confirm.

5. CLASS FLAGS

Class flags will be a green flag for IRC class, One-design classes and Open class.

6. RACING FLAG

A boat shall display the racing flag (Norway national flag) and a class color ribbon on the backstay (if the boat has not back stay a pole can be used instead).

Color of ribbon; IRC class: Pink, One-design classes: Green, Open class: Purple

The racing flag (upon request to buy) and a color ribbon will be sent with sailing instructions by mail.

7. RACING AREAS

Racing areas of the inshore races will be area A and C off Enoshima in the racing area diagram and that of the short offshore race will be Sagami Bay.

8. THE COURSES

8.1 The diagrams in Attachment show the courses, including the order in which marks are to be passed and the side on which each mark is to be left.

8.2 For the inshore races, no later than the warning signal, the race committee signal vessel will display the approximate compass bearing of the first leg.

8.3 For the inshore races, no later than the warning signal, the race committee signal vessel will display a numerical pennant for the course to be sailed.

Pennant 1: 4 legs

Pennant 2: 6 legs

8.4 The short offshore course:

Course 1:

Starting/ off Enoshima → a guide buoy off Koshigoe (anticlockwise) → Eboshi rocks (anticlockwise) → Sagami buoy #3 (anticlockwise) → Finishing/ Area A off Enoshima Yacht Harbor

Course 2:

Starting/ off Enoshima → Sagami buoy #3 (clockwise) → Eboshi rocks (clockwise) → Finishing / Area A off Enoshima Yacht Harbor

The approximate course length of the course 1 will be 18.2 n.m. and that of the course 2 will be 16.1 n.m.

The race committee signal vessel will display a numerical pennant for a course to be sailed before a warning signal is made.

Pennant 1: Course 1

Pennant 2: Course 2

9. COURSE SHOTENING

RRS 32 will apply when the course is shortened, except that finishing line will be between the top of the

Sagami buoy #3 and a staff displaying flag S on the race committee vessel displaying an EYC flag and a blue flag.

10. MARKS

10.1 Mark 1 and 2 for inshore races will be orange triangular pyramid buoys.

10.2 New marks for inshore races as provided in SI12 will be orange triangular pyramid buoys with a black stripe.

10.3 The starting marks for inshore races will be the race committee vessel at the starboard end displaying a Norway national flag and an orange triangular pyramid buoy (double as Mark 2) at the port end.

10.4 The finishing marks for inshore races will be the race committee vessel at the port end displaying a Norway national flag and an orange triangular pyramid buoy (double as Mark 2) at the starboard end.

10.5 The starting marks for the short offshore race will be the race committee vessel at the starboard end displaying a Norway national flag and an orange triangular pyramid buoy at the port end. The race committee vessel position will be at the south end of racing area A off Enoshima

Approximate position of the race committee vessel will be:

35°16.90' N 139°29.60'E.

10.6 A guiding buoy for the short offshore race will be an orange cylindrical buoy.

10.7 The approximate position of Sagami buoy #3 for the short offshore race will be:

35°12.30' N 139°27.35'E.

The depth around the above buoy is about 800 meters so that the buoy may move about 1 n.m. due to the tide of the day. The race committee vessel will stay at the buoy with displaying an EYC club flag.

10.8 The finishing marks for the short offshore race will be the race committee vessel at the starboard end displaying a Norway national flag on the mast top and a yellow triangular buoy at the port end.

11. THE START

11.1 The starting line will be between a staff displaying an orange flag on the starting mark at the starboard end and the course side of the starting mark at the port end.

11.2 A boat that does not start within 10 minutes after the starting signal will be scored Did Not Start (DNS) without hearing. This changes RRS A4 and A5.

12. CHANGE OF THE NEXT LEG OF THE COURSE

To change the next leg of the course, the race committee will lay a new mark (or move the finishing line) and remove the original mark as soon as practicable. When in a subsequent change a new mark is replaced, it will be replaced by an original mark.

13. THE FINISH

13.1 The finishing line for the inshore races will be between a staff displaying an orange flag on the finishing mark at the port end and the course side of the finishing mark at the starboard end.

13.2 The finishing line for the short offshore race will be between a staff displaying an orange flag on the finishing mark at the starboard end and the course side of the finishing mark at the port end.

14. TIME LIMITS

14.1 The time limit of the inshore races will be 120 minutes after the starting signal.

14.2 If no boat has passed Mark 1 within 30 minutes after the starting signal in the inshore race, the race will be abandoned.

14.3 The time limit of the short offshore race will be 14:00 of the day.

15. PROTESTS AND REQUESTS FOR REDRESS

15.1 A boat intending to protest shall inform the finishing race committee vessel as soon as possible after her finishing. This changes RRS61.1(a).

15.2 Protest forms are available at the race committee office. Protests and requests for redress or reopening shall be delivered there within the appropriate time limit.

15.3 The protest time limit is 90 minutes after the last boat has finished the last race of the day or the race committee signals no more racing today, whichever is later.

15.4 Notices will be posted no later than 30 minutes after the protest time limit to inform competitors of hearings in which they are parties or named as witnesses. Hearings will be held in the hearing room at race committee office.

15.5 Notices of protests by the race committee, technical committee or protest committee will be posted no later than the protest time limit to inform boats under RRS 61.1(b).

15.6 Breaches of SI 17, 22 and 25 will not be grounds for a protest by a boat. This changes RRS 60.1(a).

16. SCORING

16.1 One race is required to be completed to constitute the series of IRC class and one-design classes.

16.2 The finishing place will be determined by the corrected sailing time counted by seconds (rounding numbers smaller than a second). The rating factor calculated for the IRC class is TCC and that for the Open class will be decided by the race committee.

The smaller corrected time will be highly placed and the boat's score shall be determined by the order.

The rating factor for each boat will be notified in the HP of EYC by the previous day of the races.

16.3 The Low Point System of RRS Appendix A will apply for IRC class and one-design classes. Her score for each completed race will be calculated by the following parameters.

- Inshore race x 1.0

- Offshore race x 1.3

16.4 When there are more than two one-design classes which entry number is more than 4, the boat score will be calculated by each class.

17. SAFETY REGULATIONS

17.1 Check in

A boat shall pass the stern of committee vessel to starboard to be checked boat name by 15 minutes before the starting time.

17.2 Competitors shall wear personal floatation devices always on board. This changes RRS40.

17.3 Return report:

Finishing will be taken for returning report instead.

17.4 When a boat retires or meets the incident, the boat shall report it to race committee office immediately.

(Race committee office phone number: 0466-22-0261 EYC office)

18. REPLACEMENT OF CREW OR EQUIPMENT [DP]

18.1 Substitution of competitors will not be allowed without prior written approval of the race committee.

18.2 Substitution of damaged or lost equipment will not be allowed unless authorized by the race committee.

Requests for substitution shall be made to the committee at the first reasonable opportunity.

19. INSPECTION AND MEASUREMENT

A boat or equipment may be inspected at any time by a member of the race committee or the technical committee for compliance with the class rules and sailing instructions. On the water, a boat can be instructed by a member of the race committee or the technical committee to proceed immediately to a designated area for inspection.

20. OFFICIAL BOATS

Official boats will be marked as follows:

Committee boat: A vessel displaying a Norway national flag for inshore races and the short offshore race

Mark boat: A boat displaying EYC club flag for inshore races and the short offshore race

21. RADIO COMMUNICATION

Except in an emergency or informing her retirement, a boat that is racing shall not make voice or data transmissions and shall not receive voice or data communication that is not available to all boats. But a boat may receive the information that is available to all boats in same manner (GPS, weather forecast and marine phenomenon information).

22. USE OF ENGINE

Boat may use her engine to rescue a person over board and distressed boat, to avoid collision with other vessel, to move boat from reef, and to manage other emergency situations. Boat used her engine must report to race committee about the situation (purpose of engine use, time and location) immediately after her finishing the race.

23. PRIZES

Prizes will be given as follows:

- 1) Norwegian Ambassador's Cup: Viking ship for the winner of the IRC class
- 2) Shonan Nagisa Park Cup: For the winner of the IRC class
- 3) IRC class: Prize for the first, the second and the third place
- 4) Open class: Prize for the first place
- 5) One design classes: Prize for the first place
- 6) First home prize: Prize for the first place in the short offshore race

24. DISCLAIMER OF LIABILITY

Competitors participate in the regatta entirely at their own risk. See RRS 4, Decision to Race. The organizing authority will not accept any liability for material damage or personal injury or death sustained in conjunction with or prior to, during, or after the regatta.

25. INSURANCE

Each participating boat shall be insured with a valid yacht insurance and confirm it covers the incidents through this regatta period.

Attachment: Course diagram

1. Inshore races:

4 legs course : Start→1→2→1→Finish 6 legs course : Start→1→2→1→2→1→Finish

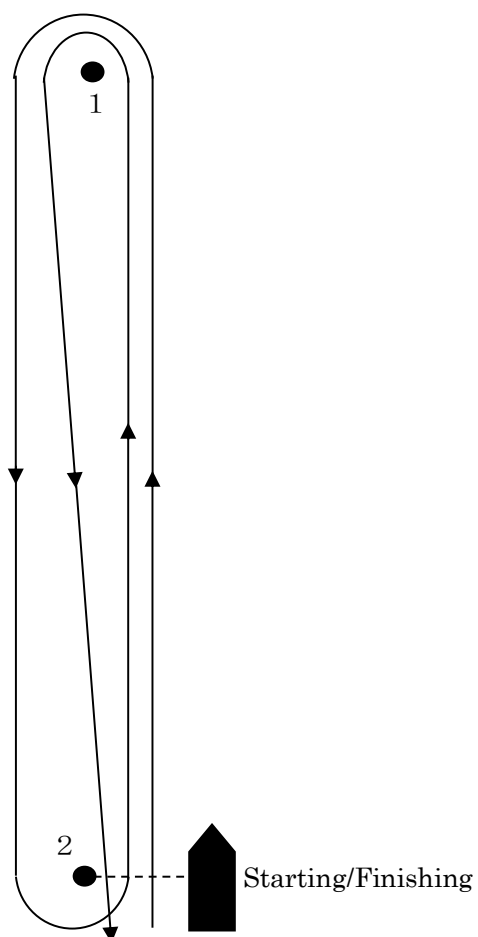
All marks should be rounded to port.

Course will be notified by displaying a numerical pennant on the race committee signal vessel before a warning signal.

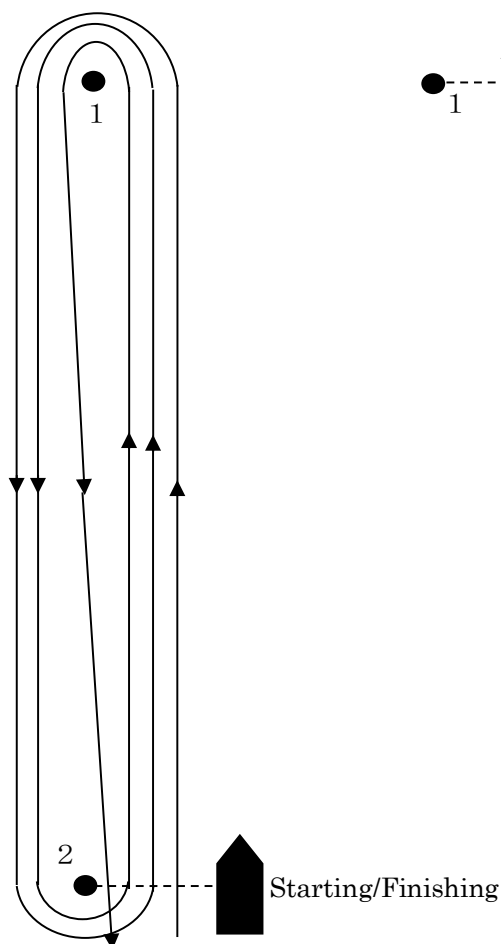
Numerical pennant 1: 4 legs course

Numerical pennant 2: 6 legs course

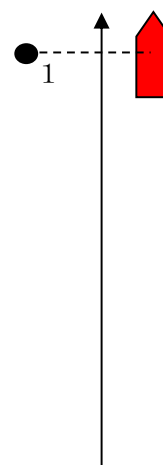
4 legs course



6 legs course



If finishing at Mark 1



II. Short offshore race:

Course 1: Numerical pennant 1 : Starting → Guide buoy off Koshigoe to port → Eboshi rocks to port → Sagami buoy #3 to port → Finishing / Area A off Enoshima

Course 2: Numerical pennant 2: Starting → Sagami buoy #3 to starboard → Eboshi rocks to starboard → Finishing / Area A off Enoshima

